

Did You Know?

A very small leak in your home can add up quickly and increase your monthly water bill. A running toilet could waste approximately 7,500 gallons of water each month.

We have after hours support. A live operator is available to take your emergency call after regular business hours. Do you need assistance? Please dial **803-359-8373** for support.

 **Know what's below.
Call before you dig by dialing 8-1-1.**

Do you know how to turn off your water in case of an emergency?

Your Main shut-off valve controls all of the water coming into your house.

Everyone in your home should know the location of this valve and how to turn it off. Water shut off valves are usually near your water heater. If there's an emergency, you'll need to know in a hurry. Once you've found it, mark it with a tag, bright ribbon or bright paint. Make it easy to see.

It's important to find and repair any leaks as soon as possible to avoid larger than normal water bills and possible water damage to your home or business.

Saving water makes cents!

Visit our website for water conservation tips:
www.lcjmwsc.com



**LEAK
DETECTION
BROCHURE**



Progress Through Cooperation

PO Box 2555
Lexington, SC 29071

Phone: 803-359-8373
Fax: 803-359-6553

E-mail: customerservice@lcjmwsc.com

Yes!
*You can find a
water leak.*

There are two main reasons to locate and know how to read your water meter:

MONITOR YOUR WATER USE. Know how much water you use in a day by reading your meter at the beginning and end of the day and comparing the two totals.

Likewise, you can check how much water you use watering the lawn, etc. by reading the meter before and after one complete cycle.

CHECK FOR LEAKS. Shut off all the taps in your house. Then look at your meter, if the numbers on the register or the red-notched dial are turning, chances are you have a leak to find.

What Do I Do Next?



Write down the reading from your water meter.



Keep record of date of leak and be sure to make note of the current billing cycle.



Customers who have completed repairs can request a leak adjustment once in a twelve month period in writing.



Visit our website www.lcjmWSC.com for a copy of the 'Leak Adjustment Request Form' by clicking on 'Customers' and 'Forms.'



Either email, fax or mail to **Customer Service**. See back of brochure for address and numbers.

WATER METER

Your personal leak detective

Even the smallest leak in your water system can cause the loss of thousands of gallons of water each month. The meter is a great tool for checking your home for leaks. Now, let's get familiar with where your meter is located and how it works in the following steps.

STEP 1: FIND YOUR METER.....

At residential properties, the water meter is generally near the curb in front of the house. The meter box will have a plastic or metal lid with "Water" marked on top.

STEP 2: OPEN THE METER BOX.....

To read the meter, remove the lid of your meter box. Be careful! Lids can be heavy and sometimes bugs and small animals hide inside the meter boxes. Replace the lid each time you finish looking at the meter to avoid a safety hazard.

STEP 3: UNDERSTAND THE DIAL.....

Sweep Hand – measures water use in gallons. One complete rotation equals 10 gallons.

Decimal Point (Fig. 1) – is needed when calculating your usage.

Stationary Zero (Fig. 2) – is needed when calculating your usage.

Leak Detection Dial – indicates water going through the meter

STEP 4: CHECK FOR LEAKS.....

1. Turn off all water inside and outside the house. Be sure no one is using water inside the home.
2. The leak detection dial will spin rapidly when water is running through the meter. If it is dripping, the leak detection dial may move slowly. If the leak is slow, it may be hard to see the dial move.
3. If you detect a leak, you will need to determine whether it's an indoor leak or an outdoor leak.

Figure 1

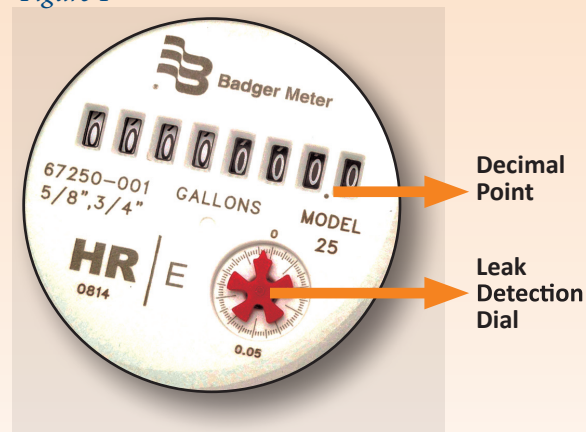


Figure 2

